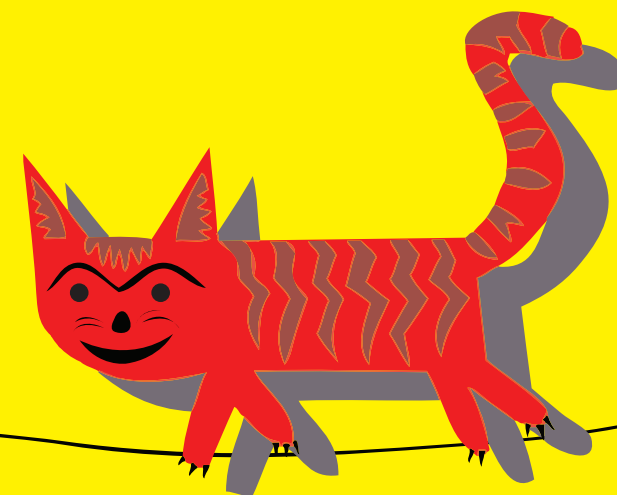


If you're not  
prepared to be  
wrong, you'll  
never come up  
with anything  
original.

- Sir Ken Robinson



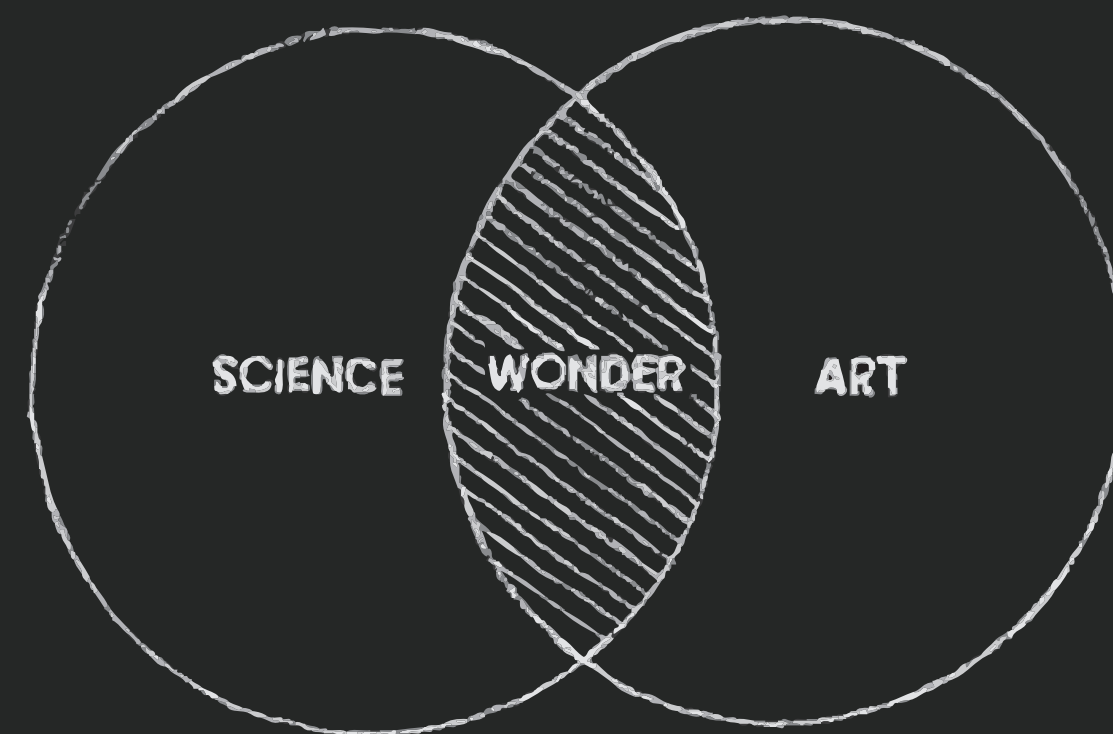
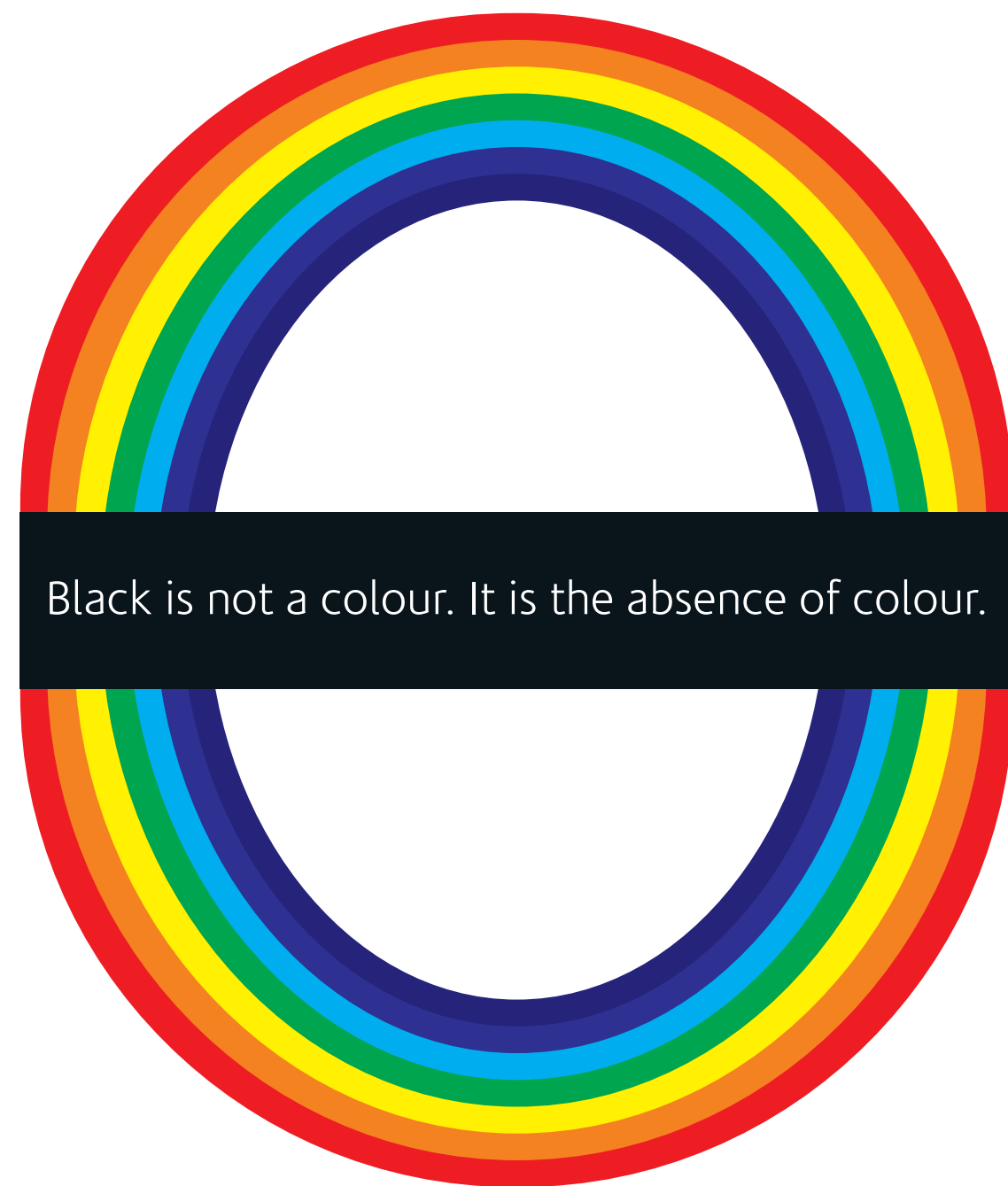
Why can't  
you paint  
a cat red?



I do it for me.

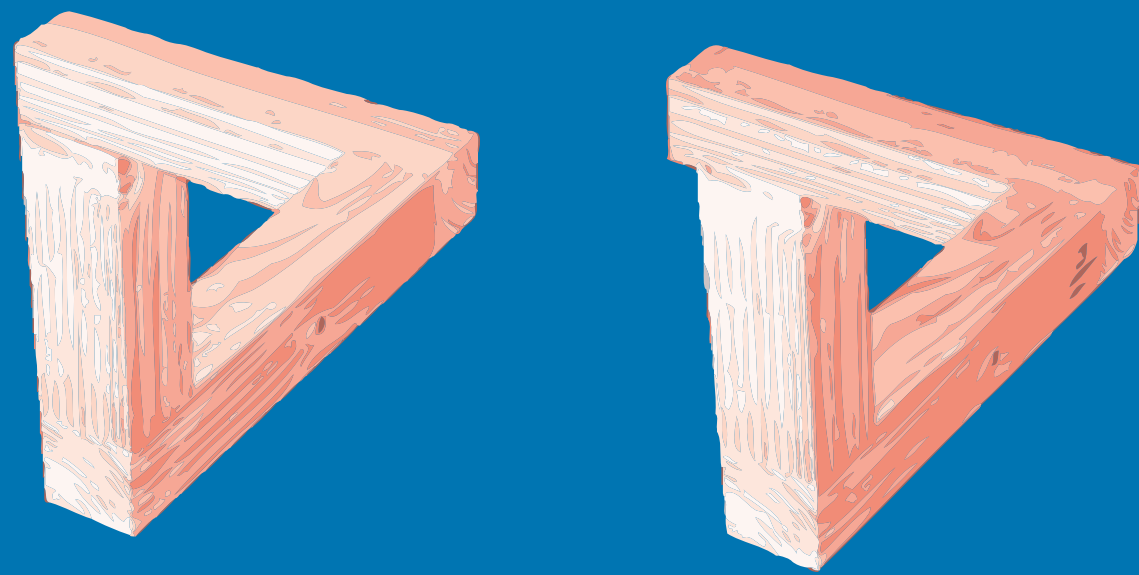


The bark is the  
song of a dog.



Art is I...science is we.  
- Claude Bernard

We don't see things as they are.



We see them as we are.



Don't be afraid  
of silly ideas.



This school is  
not made of  
brick & mortar.  
It is built on  
ideas.



**GGIS thinks of it less as a school and  
more as an academy of dreamers.**

**Because, those who dream, DO.**

**And those who DO,  
make a difference to the world.**

At GGIS, we are staunch believers of the 'textbooks don't teach you everything' philosophy.  
We know that the rigours of academics need to be coupled with  
the freedom of thought and speech.

We encourage children to be curious, to explore the world, to gather new experiences and  
to find their own answers. We believe that the whole world is a textbook, a reason why,  
over the last four years alone, GEMS students have been accepted into  
590 universities in 41 countries.



# Who are we

GEMS Genesis International School (GGIS) brings the values and expertise of GEMS Education to Ahmedabad.

GEMS Education is a global education company founded in 1959 that owns and operates dozens of international schools across five continents. The company provides private school education from Kindergarten to Grade 12 to over 110,000 students from 151 countries and employs over 10,000 professionals.

## About GEMS



### GEMS CORE VALUES

GEMS value-driven education is expressed through our four core values which are woven into every curricula offered by GEMS Schools and are at the core of our DNA.

#### World Citizenship

**Empowering Students with a Global and Local Perspective**

Students at GEMS schools learn about the world and the people in it from an early age, developing an awareness of different cultures and countries.

#### Universal Values

**Accepting that We are All Different, Recognising that We are All the Same**

Our Universal Values Programme helps students develop the values, principles and ethics that are respected, admired and accepted in all cultures around the world.

#### Leadership

**Developing each student's individuality and entrepreneurial spirit in order to discover their potential**

We encourage students to explore and question, to seek solutions, to make informed decisions and solve problems, to demonstrate tenacity and to express themselves confidently.

#### Forward Thinking

**Developing Skills for the Future**

Our educational programmes help students to become flexible thinkers who are able to question existing thinking, adapt and creatively meet the demands of the future.

Our values are woven into every school programme and are expressed through a multitude of activities which are designed to hone individual talents, grow skills and aspirations.

### CSR INITIATIVES

#### CLINTON GLOBAL INITIATIVE

GEMS Education is the first Kindergarten to Grade 12 education provider in the world to become a partner of the Clinton Global Initiative which convenes global leaders to devise and implement innovative solutions to some of the world's most pressing challenges.

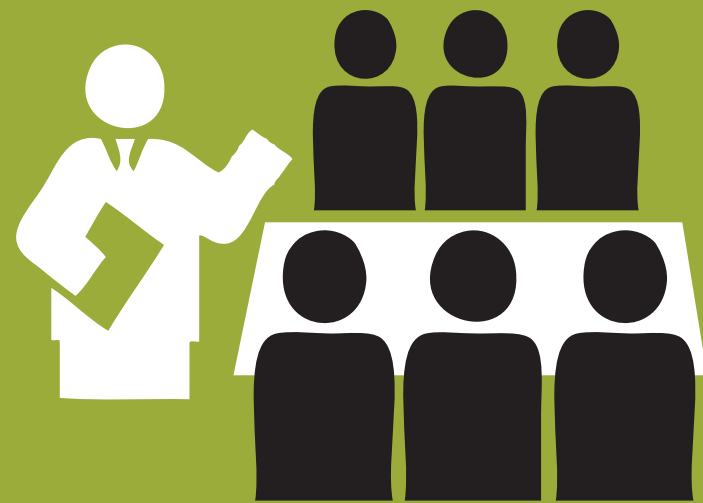
#### TONY BLAIR FAITH FOUNDATION

GEMS Education is a strategic partner with the Tony Blair Faith Foundation which aims to promote respect and understanding about the world's major religions and show how faith is a powerful force for good in the modern world.





People with whom your child  
will spend most of the time  
- GGIS teachers



GGIS believes that for students to be open-minded, the teachers should also be open to new perspectives and possibilities.

**Why can't you allow a child to paint a cat red?**

**Do we always have to stick to what's been accepted and going on for ages?**

**Why not encourage new ideas?**

**Why not take the civilization further?**

GGIS teachers come with the highest of educational qualifications and years of experience in working with children of all age groups. We have created an environment that draws from a varied pool of cultures, traditions and talent to create a universe within the school to share and learn from.

GGIS faculty is trained by GEMS on the pedagogical approach, international standards and other important aspects of teaching. Through an in-house team of experts supported by university partners and internationally recognised advisors, GEMS provides an extensive range of professional development and training programmes that are designed to ensure that teachers remain at the forefront of educational thought and practice.



There are  
**no shortcuts**  
to any place worth going.

- Beverly Sills



# Design is a funny word.

Some people think design means how it looks.  
But of course, if you dig deeper, it's really how it works.  
- Steve Jobs



## GGIS'

architecture is special. Inspired by the LEGO blocks, the structure is a symbol of creativity and a departure from the norm. Each and every element of the school building has been designed keeping children's needs in mind.

The 13-acre campus provides large open spaces that encourage children to be with nature. There is a dedicated space for indoor and outdoor sports. GGIS believes that when children are active in sports, they don't just acquire a talent, they learn about team spirit, patience, focus, perseverance and competitiveness - each a virtue in today's world.

GGIS campus is a combination of classrooms, practical labs and public spaces that encourage children to interact with other students and faculty members. All these elements have been designed keeping in mind the need for development of soft and interpersonal skills among children.

# A typical GGIS classroom

## – not so typical in fact

GGIS classrooms are large, well-lit and ventilated, modern and well-equipped, colourful and creative. They are not essentially classrooms but spaces that inspire both students and teachers alike to think differently.

Each classroom is a massive 550 square feet with a 12 feet ceiling height and toughened glass panes that look out to the green campus and blue skies above.

The ground floor classrooms are dedicated for KG and primary classes as the safety of children is given utmost importance. KG classrooms have a private garden, so that they can be outdoors for more time but under the watchful eye of the teacher. This is a thoughtful feature of the GGIS architecture. Usually, it is observed that play areas are far away from classrooms, making it a little impractical and unsafe for KG children to access them. Similarly, GGIS KG classes have washrooms attached to the classrooms, making them easily accessible and again not away from the teacher.



## Class strength

GGIS classroom strength has been restricted to a maximum of 25 students - small enough for each one to get personal attention and big enough for group activities and development of social skills among children.

### Happy Hours – Class timings

9:30 am to 1:30 pm – KG Section

8:00 am to 3:30 pm - Grade I to VII

School will be closed on Saturdays and Sundays





# Spaces

should inspire you

**Aeronautics and Robotics Lab** – This is a place where the dreams of children can soar to new heights, literally speaking. Our high-tech AR Lab provides hands-on experience to children in this new and emerging field.

**Art Lab** – Artistic expressions need an inspiring environment. GGIS Art Lab is loaded with artistic inspirations and material to experiment with, helping children express themselves in creative ways.

**Math Lab** – A place where numbers and abstracts come alive, algebra is not fearsome and trigonometry is tangible. Equipped with mathematical tools and things for children to fiddle with, GGIS Math Lab is going to ground the concepts so that they stay for life.

**Music Lab** – Music is a universal language. At GGIS we provide exposure to various instruments and try to inculcate a long-lasting love for music.

**Science Labs** – Well-equipped labs for Physics, Chemistry and Biology to help children get a better understanding of Science.

**Computer Lab** – A state-of-the-art, wifi-enabled lab with Macintosh environment forms a part of computer learning at GGIS. Appropriate educational and reference software would also be available.

**Wellness Area** – A special designated area with bed for our babies to rest when they are not feeling well. Equipped with all necessary medications, GGIS ensures your child feels safe and secure.

## Facilities

- AC classrooms with smart-board, projector and TV
- Each class to have its own private garden for KG-2
- In class washrooms for KG-2
- Outdoor stage with green room

## Other facilities

### The joyride to school and back home

GGIS provides GPS-enabled, air-conditioned transport with pick-up points across most important locations of Western Ahmedabad. The routes are planned in a manner whereby the commute from the pick-up point to school is not more than 45-55 minutes.





### Board and Curriculum\*

GGIS would be affiliated to the Council for the Indian School Certificate Examinations offering Indian Certificate of Secondary Education Examination (ICSE) at Grade 10. Further, the students can opt between Indian School Certificate (ISC) examination or International Baccalaureate (IB) Diploma at Grade 12.

### Grading System

Continuous and Comprehensive Evaluation forms a part of everyday learning at GGIS. Besides, GGIS follows appropriate methods of periodic evaluation, keeping the Minimum Learning Levels in mind for Grades 1 and above. KG children will be assessed only under the Continuous and Comprehensive Evaluation system.

# Co-curricular/extra-curricular activities

## Educational visits

They say the world is your best teacher. That is why, at GGIS, we lay special emphasis on educational visits. These visits are planned keeping in mind the age and safety of the children. Such educational trips are an essential part of a child's learning as they inculcate a sense of independence and instill confidence in them apart from teaching them about a new place, history, culture, science et al.

## Festival celebrations

With the diversity that India and the world has, it is important to know about different cultures. Celebrating festivals at GGIS is also a way of understanding and being sensitive towards different faiths, religions and cultures. Festivals are occasions of spreading happiness and GGIS believes that for children to be better world citizens, celebrating these joys of life is an essential part of learning.

## Parent workshops

The GEMS Parental Engagement Programme is a priority in every GEMS school. This initiative requires strategic and on-going support of parents to help further student progress.

Here, we facilitate regular opportunities for parents to understand the value of engagement and help develop their skills to assist learning at home. GEMS ensures the school infrastructure and professional development to integrate parents into teaching and learning, and provides information, tips and resources on both parenting and how to support the '3-a-day' approach at home which gives parents clear and simple direction to engage every day, in their own style or way.



# Sports

**“It’s not just about being Sachin.”**

GGIS believes that sports teach you much more than just how to play badminton or cricket or how to swim and sprint.

Sports, first and foremost, teach children the importance of staying fit. A value that influences their quality of life forever. Sports also teach children to focus, plan, persevere, work hard and to take victory and loss in their stride - all the qualities that are important for every aspect of life.

## **GGIS sports amenities**

- Semi-Olympic size swimming pool with changing rooms
- Football ground
- Cricket ground
- Basketball court
- Tennis courts
- Athletic track



**We  
are  
what  
we  
eat**



## Nutrition at GGIS

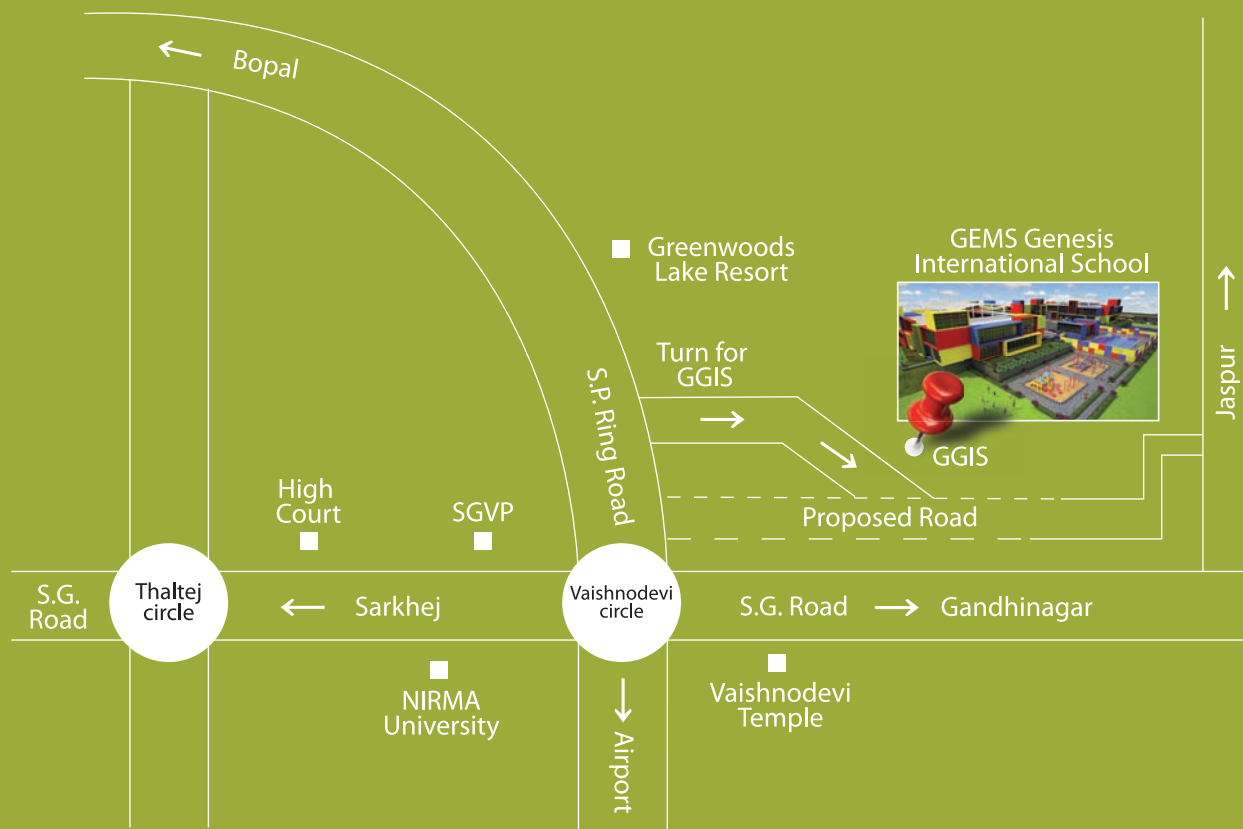
GGIS lays special emphasis on nutrition and health as they play a significant role in a child's physical and mental development. The scientifically designed meals at GGIS comprise of world cuisines and offer balanced nutrition.

The pre-packed meals for GGIS are designed by leading nutritionists and are prepared under strict supervision. The meal plans are optional and children are free to carry their own lunch.



Brilliant ideas  
like diamonds  
are rare  
and only possible  
given special  
conditions.





## SCHOOL LOCATION MAP

\*This is an information-only document and not an abiding proof of any manner. The school building images as shown in this document are an artist's impression and may change. Various permissions from relevant authorities will be obtained. CISCE and IB affiliations will be obtained at appropriate time.



GEMS Genesis International School (GGIS)  
A GEMS Managed School

Nr. Vaishnodevi Circle, S.P. Ring Road, Ahmedabad - 382421 Ph: +91 9274022333 / 444  
mail@theggis.com | www.gemsgenesisinternationalschool-ahmedabad.com | www.theggis.com  
www.facebook.com/theggis | www.gemseducation.com